




**TAURUS**  
GTA005XXX

SPECIFICATION SHEET

---



<b>635nm</b> Nominal Wavelength	<b>CW</b> Output Type	<b>DIODE</b> Laser Source Type
------------------------------------	--------------------------	-----------------------------------

## Overview

The Taurus is the latest in functionality, reliability, portability and output power stability. The click-on, click-off switch allows hands-free operation and easy use when continuous operation is required. The miniature heat sink means that the output will not drop during long operating periods, and the single lithium battery will keep the unit running for up to 36 hours! The Taurus is ideal for alignment and a wide range of other continuous use applications. With a 635 nm wavelength the Taurus is approximately 2 times brighter than other less expensive red pointers - which normally use a 650 nm or 660 nm diode, making the Taurus the brightest Class IIIa red laser pointer available. As with all Laserglow products the Taurus employs the highest level of quality and craftsmanship to make this simply the best Class IIIa red laser pointer on the market.

## Key Features

- Battery: 1 x CR123A (Over 36 hours use with a new battery!)
- Output Power: 3.5 mW to 4.99 mW
- Casing: Hard Anodized black machined aluminum
- Wavelength: 635 nm
- 100% continuous operation, click-on/click-off
- Package Includes: Portable laser, battery, carrying case, instructions/warranty.
- Safety Info: Complies with Class IIIa regulations.
- Duty Cycle: 100%

## Specifications

Laser Form Factor	GTA
Output Power (mW):	<5
FDA Safety Class:	IIIa
Central Wavelength (nm):	635
Divergence (mrad, full angle):	<1.2
Beam Dimensions (mm, 1/e <sup>2</sup> ):	1.5x3.5
Transverse Mode:	Near TEM00
Longitudinal Modes:	Multiple
Operating Temperature Range (°C):	15 to 35
Storage Temperature Range (°C):	-10 to 50
Total Power Consumption (W):	1
Max. Power Input Duty Cycle:	100%
Cooling Method:	Passive Air
Standard Warranty (months):	6
MTTF (operational hours):	5000

### Laserglow Technologies

<b>Weight of Product or Laser Head (kg):</b>	0.04
<b>Dimensions of Product or Laser Head (mm):</b>	85 (l) x 20 (d)
<b>Power Supply:</b>	1 x CR123A Battery

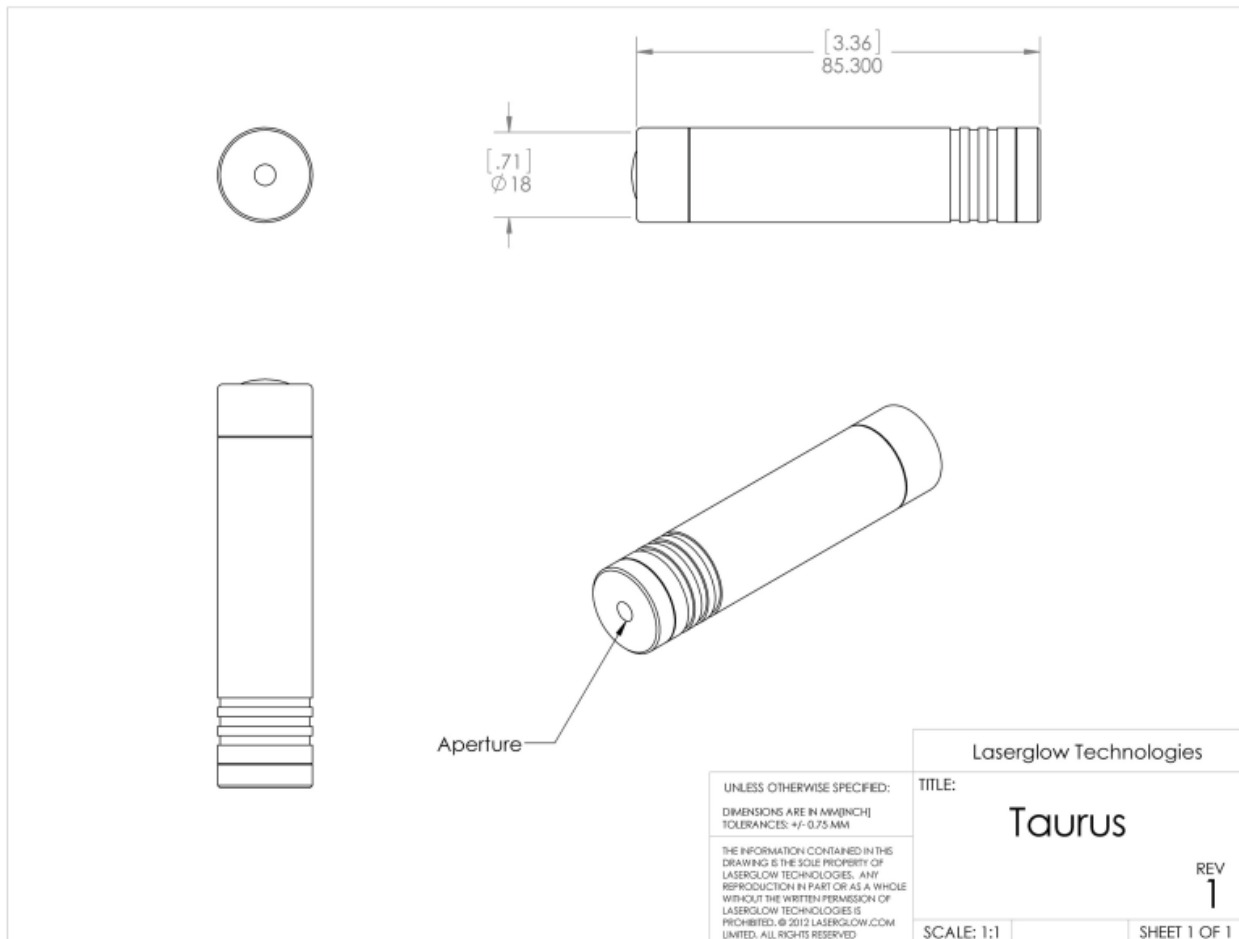
CW: All specifications are based on performance at full output power and after the specified warmup period. Output characteristics may change if the laser is run at a different power level. Q-Switched: Specifications are based on the laser pulsing at the specified design frequency. Output characteristics may change if the laser is run at a different frequency.

## REGULATORY CLASSIFICATION

The model you have selected (GLY005BXX) requires the following safety label(s):



# DIMENSIONAL DRAWING - LASER FORM FACTOR: GTA



**E&OE: Data included in this sheet may be subject to change without notice. Please confirm critical specifications with our staff prior to ordering.**